

APPLICAT-PRAZAN

Press release

On the occasion of



17 – 20 October 2019

**Applicat-Prazan**  
is presenting



**Nicolas de STAËL (1914 - 1955)**  
Paysage de Provence, 1953  
Oil on canvas  
81 x 65 cm

APPLICAT-PRAZAN  
Rive gauche  
16 rue de Seine – 75006 Paris

APPLICAT-PRAZAN  
Rive droite  
14 avenue Matignon – 75008 Paris

Lignes groupées: tel +33 (0) 1 43 25 39 24 - fax +33 (0) 1 43 25 39 25 - galerie@applicat-prazan.com - www.applicat-prazan.com

APPLICAT - SAS au capital de 12 000 € - 390 477 255 RCS PARIS - NAF 4779Z - TVA FR 25390477255

Siège social et adresse de correspondance: 16 rue de Seine - 75006 Paris - France

# APPLICAT-PRAZAN

Each autumn, the Grand Palais welcomes the FIAC art fair where Applicat-Prazan will be showing a selection of paintings signed by European post-war painters such as Martin Barré, Nicolas de Staël, Maurice Estève, Serge Poliakoff and Georges Mathieu.

A recent exhibition at the Hôtel de Caumont in Aix-en-Provence celebrated the Provençal period of **Nicolas de Staël** where this *Paysage de Provence* dated 1953 was exhibited. This period was a particularly important turning point in the painter's life and work. Between July 1953 and June 1954, the artist drew new inspiration from the Provence scenery. His discovery of the midday Provençal sun, the exceptional beauty of the landscapes, his love affair and intense experience of solitude during which he isolated himself to prepare his future exhibition at Paul Rosenberg's Gallery in New York, were all experiences that nourished his imagination and the incredible pace of his artistic work.

In 1954, following a year of intensive work, the painter was confident that he had done his best. He wrote to Paul Rosenberg: "*What I've given you should ensure that you can hold the finest ever exhibition of my work.*"

*60 T 23* by **Martin Barré** belongs to the foundation period of the artist's work between 1954 and 1960. An exacting artist in a class of his own, his perpetual quest was the reflection upon the issues of background and space. He followed the tradition of Mondrian and Malevitch stating, "*To me, all painting seems to lead towards the white square on a white background by Malevitch, and sets off from there.*"

*Langolem* by **Maurice Estève** is a delicate oil on canvas executed in 1978. As Jean Leymarie said, his colours are always orchestrated but never premeditated. In addition to the extraordinary colour mastery of the artist, this canvas shows the duality of his work – neither truly figurative nor completely abstract and thus demonstrating the strength of Estève's painting.

"*The colour finds its place at the same time as the shapes. Each element seeks its place on the work in progress... Each painting is a sequence of metamorphoses...*" (Estève, *Zodiaque*, April 1979).

From the former collection of the Belgian, Philippe Dotremont, *Composition abstraite* by **Serge Poliakoff** is a 1954 oil on canvas. Unique and immediately recognisable, Poliakoff's painting is the result of a very personal research on forms, colours and matter and how to make them vibrate together.

The exhibition is completed and enhanced by a 1952 yellow composition on a black field by **Georges Mathieu**. In April 1948 at the Gallery of Colette Allendy, the visionary **Georges Mathieu** organized a first exhibition entitled HWPSMTB bringing together Hartung, Wols, Picabia, Stahly, Mathieu, Tapié and Bryen. Later, in the same year, he coordinated a second exhibition at the Galerie du Montparnasse with French and American artists. Works by Pollock, Tobey, Gorky, Reinhardt, Russell, de Kooning, Rothko and Sauer were hung alongside works by Bryen, Hartung, Picabia, Wols. Abstract Expressionism thus came face to face with the Abstraction Lyrique movement of which Mathieu was the principal theoretician and exponent.

Mathieu once said: "*For the preparation of my 1952 and 1954 exhibitions, and by introducing – discreetly at first – speed and improvisation, to a degree never previously seen, I shook up these petty and age-old, preconceived, Western ideas, and witnessed all the shutters of incomprehension, of indignation and revolt slam shut against me.*"

APPLICAT-PRAZAN

Rive gauche

16 rue de Seine – 75006 Paris

APPLICAT-PRAZAN

Rive droite

14 avenue Matignon – 75008 Paris

Lignes groupées: tel +33 (0) 1 43 25 39 24 - fax +33 (0) 1 43 25 39 25 - galerie@applicat-prazan.com - www.applicat-prazan.com

APPLICAT - SAS au capital de 12 000 € - 390 477 255 RCS PARIS - NAF 4779Z - TVA FR 25390477255

Siège social et adresse de correspondance: 16 rue de Seine - 75006 Paris - France

Images available



**Martin BARRÉ (1924 - 1993)**

60 T 23, 1960  
Oil on canvas  
Signed upper left, signed, dated and titled on the reverse  
86 x 80 cm

Provenance:  
Private collection, Verviers  
Galerie Jacques Barbier, Paris  
Former Collection of Dr Guibert, Poitiers

Literature:  
Yve-Alain Bois, Martin Barré, Daniel Buchholz, Andrew Kreps,  
Nathalie Obadia, Thea Westreich and Ethan Wagner, 2008, ill.  
p. 85

This work will be included in the forthcoming catalogue raisonné of works by the Artist being prepared by Yve-Alain Bois and Ann Hindry.



**Nicolas de STAËL (1914 - 1955)**

Paysage de Provence, 1953  
Oil on canvas  
Signed lower left  
81 x 65 cm

Provenance:  
Jacques Dubourg, Paris  
Former collection of V. Theodore Low, New York

Exhibited:  
Washington D.C., The Philips Collection, Nicolas de Staël in America, 9 June - 9 Sept. 1990, n° 33 p. 178, col. ill., p. 90  
Aix-en-Provence, Hôtel de Caumont, Nicolas de Staël en Provence, 27 Apr. - 23 Sept. 2018, cat. ill. f/p col p. 27

Literature:  
Douglas Cooper, Nicolas de Staël, London, 1961, n° 48, ill. p. 77  
Jacques Dubourg, Françoise de Staël, Nicolas de Staël, Catalogue raisonné des peintures, éditions Le Temps, Paris, 1968, n° 607, ill. p. 268  
Daniel Grojnowski, Nicolas de Staël, description d'un itinéraire, in Critique, n° 234, Paris, 1966, p. 948  
Daniel Dobbels, Staël, Paris, 1994, ill. p. 97, col. ill. pl. 55

# APPLICAT-PRAZAN

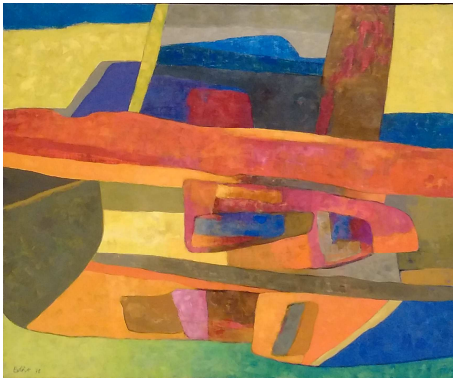
Françoise de Staël, Nicolas de Staël, Catalogue raisonné de l'œuvre peint, Ides et Calendes, Neuchâtel, 1997, n° 647, ill. p. 442

Guitemie Maldonado, Nicolas de Staël, Citadelles & Mazenod, Paris, 2015, ill. f/p col. p. 175

Connaissance des arts, special issue n° 807, Nicolas de Staël en Provence, ill. f/p col. p. 15

Connaissance des arts, May 2018, ill. col. p. 52

La Gazette de l'Hôtel Drouot, 11 May 2018, ill. f/p col. p. 173



## **Maurice ESTÈVE (1904 - 2001)**

*Langolem*, 1978

Oil on canvas

Signed and dated lower left; titled, signed and dated on reverse

60 x 73 cm

Provenance:

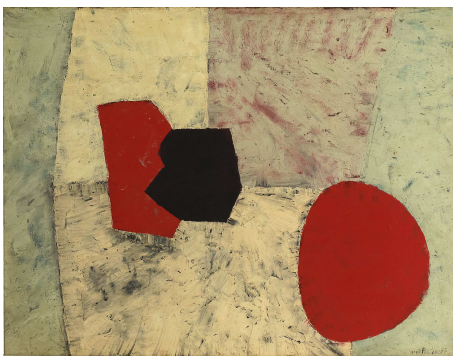
Private collection

Exhibited:

Paris, Galeries nationales du Grand Palais, Estève (œuvres 1919-1985), 18 Oct. 1986 – 12 Jan. 1987, cat. n° 91, ill. p. 193

Literature:

Robert Maillard et Monique Prudhomme-Estève, Estève, Catalogue raisonné de l'œuvre peint, Ides et Calendes, Neuchâtel 1995, n° 677, ill. p. 410



## **Serge POLIAKOFF (1900 - 1969)**

*Composition abstraite*, circa 1954

Oil on canvas

Signed lower right; Signed on the reverse

89 x 116 cm

Provenance:

Former collection of Philippe Dotremont, Brussels

Knoedler & Co, New York

Galerie du Perron, Geneva

Collection of Nancy Lee & Perry R. Bass, Fort Worth

Literature:

Cimaise, Paris, n° 4, March 1956, ill. p. 15

Dora Vallier, Serge Poliakoff, Cahiers d'Art, Paris 1959, n° 32, ill. p. 65

Jean Cassou, Serge Poliakoff, Bodensee 1963, n° 10, ill. p. 30

Serge Poliakoff, Retrospective 1938-1963, exhibition catalogue, Whitechapel Gallery, London, 1963, n° VIII, ill.

APPLICAT-PRAZAN

Rive gauche

16 rue de Seine – 75006 Paris

APPLICAT-PRAZAN

Rive droite

14 avenue Matignon – 75008 Paris

Lignes groupées: tel +33 (0) 1 43 25 39 24 - fax +33 (0) 1 43 25 39 25 - galerie@applicat-prazan.com - www.applicat-prazan.com

APPLICAT - SAS au capital de 12 000 € - 390 477 255 RCS PARIS - NAF 4779Z - TVA FR 25390477255

Siège social et adresse de correspondance: 16 rue de Seine - 75006 Paris - France

# APPLICAT-PRAZAN

Giuseppe Marchiori, Serge Poliakoff, Les Presses de la  
Connaissance, Paris 1976, ill. p. 53  
Alexis Poliakoff, Serge Poliakoff, Catalogue raisonné, vol. I  
1922 – 1954, Acatos, Paris, Moudon 2005, n° 54-87, ill. p. 518



## **Georges MATHIEU (1921 - 2012)**

*Composition*, 1952

Oil on canvas

Signed and dated lower right

97 x 195 cm

Provenance:

Galerie Ariel, Paris (inv. n° 7352)

Galleria Levi, Rome (inv. n° 743/P)

The Waddington Galleries, London (inv. n° WGB2478)

Private collection, Paris

The Comité Georges Mathieu has issued a certificate of authenticity n° GM50058 dated 19 December 2018 and this work will be included in the catalogue raisonné of the Artist's works.

**For images – please mention:**

**Courtesy Applicat-Prazan, Paris / © Adagp, Paris 2019**

APPLICAT-PRAZAN

Rive gauche

16 rue de Seine – 75006 Paris

APPLICAT-PRAZAN

Rive droite

14 avenue Matignon – 75008 Paris

Lignes groupées: tel +33 (0) 1 43 25 39 24 - fax +33 (0) 1 43 25 39 25 - galerie@applicat-prazan.com - www.applicat-prazan.com

APPLICAT - SAS au capital de 12 000 € - 390 477 255 RCS PARIS - NAF 4779Z - TVA FR 25390477255

Siège social et adresse de correspondance: 16 rue de Seine - 75006 Paris - France

# APPLICAT-PRAZAN

## APPLICAT-PRAZAN: history

Bernard Prazan, an art-collector of long standing, founded his first gallery in 1989. Since its inception Applicat-Prazan specialises exclusively in top quality paintings by:

**Jean-Michel Atlan, Karel Appel, Jean Dubuffet, Maurice Estève, Jean Fautrier, Hans Hartung, Auguste Herbin, Jean Hélion, Asger Jorn, Wifredo Lam, André Lansky, Alberto Magnelli, Alfred Manessier, André Masson, Georges Mathieu, Serge Poliakoff, Jean-Paul Riopelle, Gérard Schneider, Pierre Soulages, Nicolas de Staël, Victor Vasarely, Bram van Velde, Geer van Velde, Maria Elena Vieira da Silva, Wols, or Zao Wou-Ki.**

In 2004 Bernard's son, Franck Prazan, took over the management of the gallery. Franck was formerly Managing Director of Christie's and was responsible for its move to Avenue Matignon in Paris, overseeing its development from a simple representative office to a fully-fledged auction house.

Applicat-Prazan's philosophy is as follows:

- **Hyper-specialization** which has led the gallery to concentrate uniquely on European Post-war and on the most significant Artists of this period
- **Hyper-selectivity** – confining the gallery's choice of paintings to those we judge to be the most qualitative
- A policy specifically adapted to the **private collector** who by definition takes a **long term view** of things, smoothing out the effects of speculation.

Certain paintings are particularly worthy of note these last few years. For example:



**Nicolas de Staël**  
*La Table de l'Artiste*, 1954  
89 x 116 cm  
Biennale 2008



**Jean-Paul Riopelle**  
*Hommage à Robert le Diable* 1953,  
200 x 282 cm  
Tefaf 2010



**Hans Hartung**  
*T 1938-11*, 1938  
102 x 80 cm  
Fiac 2011



**Pierre Soulages**  
*Peinture 195 x 130 cm*,  
*1<sup>er</sup> sept. 1957*  
Fiac 2009



**Nicolas de Staël**  
*Agrigente*, 1954  
60 x 81 cm  
Tefaf 2015



**Jean Dubuffet**  
*Epoux en visite*, 1964  
200 x 150 cm  
Biennale 2010

APPLICAT-PRAZAN  
Rive gauche  
16 rue de Seine – 75006 Paris

APPLICAT-PRAZAN  
Rive droite  
14 avenue Matignon – 75008 Paris

Lignes groupées: tel +33 (0) 1 43 25 39 24 - fax +33 (0) 1 43 25 39 25 - galerie@applicat-prazan.com - www.applicat-prazan.com

APPLICAT - SAS au capital de 12 000 € - 390 477 255 RCS PARIS - NAF 4779Z - TVA FR 25390477255

Siège social et adresse de correspondance: 16 rue de Seine - 75006 Paris - France

# APPLICAT-PRAZAN

The "Schneider, Oeuvres majeures autour d'un tableau d'exception" exhibition, shown at the FIAC in 2006 enjoyed great success. In May 2007 Applicat-Prazan showed at the gallery "Mes Années 50, Collection Alain Delon". The subtle palette of a great artist, Geer van Velde, was on display in September 2007 at "Presence, silences, hommage à Geer van Velde". In April-May 2008 the *Poliakoff* exhibition marked a milestone for the artist's career in the international art market, as was the *Atlan* exhibition organised from October to December 2008 concurrently with an exhibition at the Centre Pompidou of a gift to the nation of works by the same artist. *Dialogues I Autour de Pierre Soulages*, October to December 2009, marked an important chapter in the life of the gallery. The monographic exhibitions *Pincemin* and *Fautrier* in October 2010, followed by *Alfred Manessier: Tours, Favellas and other monumental works*, in 2012 certainly made a deep impression. Still in 2012, our exhibition of *Masson, 1934 - 1944* at Art Basel revealed a fresh interpretation of the talent of this great surrealist, the key to all post-war abstract expressionism. In 2013, our *Tribute to Maurice Estève* attracted many collectors at the Salon du Dessin in Paris. In 2013 the *Serge Poliakoff* exhibition at the FIAC was a resounding success, and the 2014 FIAC saw the opening of our exhibition of 16 major works in *Georges Mathieu - Peintures 1948-1959* which met with great interest and approval from the public and the media. At Fiac 2015, the gallery exhibited a selection of 24 paintings by Maurice Estève from 1929 to 1994. In 2016, the gallery showed two series of works by Zoran Music : « *We are not the last* » and large self-portraits of the 1990's. In 2018, Applicat-Prazan paid a warm tribute to Michel Tapié through our exhibition entitled "Le grand Œil de Michel Tapié".

Applicat-Prazan exhibits at **Tefaf Maastricht, Art Basel Hong Kong, Tefaf New York Spring, Art Basel, Frieze Masters, the Fiac and Art Basel Miami.**

In 2017, Applicat-Prazan had the honour of being appointed by MoMA to accompany the Museum in the de-accessioning of 2 paintings.

Applicat-Prazan is located on the Left Bank at **16 Rue de Seine** in the very heart of the art gallery district of Saint-Germain-des-Prés. The end of 2010 saw the opening of a second address strategic to the Paris art market on the Right Bank at **14 Avenue Matignon.**

## Contact Presse :

Céline Hersant

Applicat-Prazan

Tel. : +33 (0)1 43 25 39 24 / Port.. : +33 (0)6 78 42 70 04

celine.hersant@applicat-prazan.com

[www.applicat-prazan.com](http://www.applicat-prazan.com)



## Downloads:

The press release and high definition visuals of the works can be downloaded from the Private section of our internet site : [www.applicat-prazan.com](http://www.applicat-prazan.com)

Login: Applicat

Password: Prazan

Follow Franck Prazan on his blog: [www.franck-prazan.com](http://www.franck-prazan.com)

APPLICAT-PRAZAN

Rive gauche

16 rue de Seine - 75006 Paris

APPLICAT-PRAZAN

Rive droite

14 avenue Matignon - 75008 Paris

Lignes groupées: tel +33 (0) 1 43 25 39 24 - fax +33 (0) 1 43 25 39 25 - galerie@applicat-prazan.com - www.applicat-prazan.com

APPLICAT - SAS au capital de 12 000 € - 390 477 255 RCS PARIS - NAF 4779Z - TVA FR 25390477255

Siège social et adresse de correspondance: 16 rue de Seine - 75006 Paris - France